

* All images used are for illustrative purposes only.



Download
LG C-Display+
Mobile App
Google Play Store

- www.lg.com/global/business/information-display
- www.youtube.com/c/LGECCommercialDisplay
- www.facebook.com/LGInformationDisplay
- www.linkedin.com/company/lginformationdisplay
- twitter.com/LG_ID_HQ



LG may make changes to specifications and product descriptions without notice.
Copyright © 2022 LG Electronics Inc. All rights reserved. "LG Life's Good" is a registered trademark of LG Corp.
The names of products and brands mentioned here may be the trademarks of their respective owners.

2024 GLOBAL

LG DIGITAL SIGNAGE

Commercial Displays and Solutions



* All images are intended to help you understand, and there may be some differences in practical use.



WELCOME TO OUR SHOPPING MALL

20% OPENING DISCOUNT

PREVIOUS SEASON SALE

SPECIAL EVENT SALE

TO SHINE YOUR WRIST

FOREST PRINCESS
LG LED Cinema

GIFT TO YOUR GRATEFUL

A CAR FOR SPECIAL PERSON LIKE YOU

Shape Immersive Moments. Share Innovative Experience.

Believe your business should be more impactful and iconic. LG Business Solution is here to realize the true potential of your business. Display all your boundless ideas on digital signage and watch the technology of LG Business Solutions shapes them into immersive moments. Make your ideas more outstanding through reality and vividness beyond your imagination and interactivity that allows people to engage. All immersive moments combine to create innovative experience for your business.

LED LINE UP

Indoor LED LSBB Series

LSBB | P0.94 P1.25 P1.56 P1.88



- Pixel Pitch: 0.94 mm
- Brightness: 600 nit
- Status Indicator of Signal Detection
- Front Serviceability
- Easy-handling Lightweight Cabinet
- Compatibility with LG Software Solutions

* Based on LSBB009 Specification

Outdoor LED GPEJ Series

GPEJ | P10.00



- Pixel Pitch : 10 mm
- Brightness : 6,000 nit
- Service Access : Front and Rear
- IP Rating : IP65
- Protective Design for Players
- Smooth Playback in Dynamic Motion

* Based on GPEJ100 Specification

Indoor LED LSBC Series

LSBC | P1.95 P2.60 P2.98 P3.91



- Pixel Pitch: 1.95 mm
- Brightness: 800 nit
- Vivid Color Expression Powered by HDR
- 90° Corner Installation Design Available
- Front or Rear Serviceability
- Compatibility with LG Software Solutions

* Based on LSBC019 Specification

Outdoor Mesh LED GMBD Series

GMBD | P35.00 P40.00



- Pixel Pitch: 35 mm
- Brightness: 7,500 nit
- IP Rating: IP66
- Flexibility for Various Screen Shapes
- Lightweight Mesh LED
- Easy Maintenance

* Based on GMBD035 Specification

Indoor LED LSCA Series

LSCA | P2.97 P3.91



* The image above may differ from the actual appearance.

- Pixel Pitch: 2.97mm
- Brightness: 1,000 cd/m²
- Fast Assembly and Easy Maintenance
- Two Cabinet Options
- 90° Corner Option Available

* Based on LSCA029 Specification

Outdoor LED GSEG Series

GSEG | P5.95 P8.33 P10.42



- Pixel Pitch : 5.95 mm
- Brightness : 6,000 nit (-GN) / 7,000 nit (-GR)
- Service Access : Front and Rear
- IP Rating : IP66
- Available for Curved Screen
- Easy Installation and Maintenance

* Based on GSEG060 Specification

LED LINE UP

Outdoor LED GSEH Series

GSEH | P6.00 P8.00 P10.67 P16.00

- Pixel Pitch: 6.00 mm
- Brightness: 8,500 nit
- Quick Installation
- Easy Maintenance
- Front and Rear Serviceability
- Compatibility with LG Software Solutions

* Based on GSEH060 Specification



Stadium LED GREF Series

GREF | P10.00

- Pixel Pitch: 10 mm
- Brightness: 6,000 nit
- IP Rating: IP65
- Smooth Playback in Dynamic Motion
- Detailed Expression of Color Depth

* Based on GREF100 Specification



Marine grade GNEA Series

GNEA | P6.25 P8.33 P10.00

- Pixel Pitch: 6.25 mm
- Brightness: 6,000 nit
- IP Rating: IP67
- Durability for Rough Environment
- Safe Installation and Maintenance
- High Refresh Rate

* Based on GNEA062 Specification



Outdoor LED GSED Series

GSED | P2.5

- Pixel Pitch: 2.50 mm
- Brightness: 4,000 nit
- Eye-level Pitch for Outdoor
- Design for Durability and Easy Maintenance
- Front and Rear Serviceability
- IP Rating: IP65

* Based on GSED025 Specification



Marine grade GNEB Series

GNEB | P6.25 P8.33

- Pixel Pitch: 6.25 mm
- Brightness: 6,000 nit
- IP Rating: IP67
- Durability for Rough Environment
- Flexible Configuration and Installation
- High Refresh Rate

* Based on GNEB062 Specification



Outdoor LED GSCA Series

GSCA | P3.91 P4.63

- Pixel Pitch: 3.91 mm
- Brightness: 5,000 cd/m²
- Fast Assembly and Easy Maintenance
- Two Cabinet Options
- IP65 Weatherproof Design
- 90° Corner Option Available

* Based on GSCA039 Specification



* The image above may differ from the actual appearance.

LED LINE UP

Outdoor LED GSCD Series

GSCD | P6.94 P10.41 P12.50



*The image above may differ from the actual appearance.

- Pixel Pitch: 6.94mm
- Brightness: 5,000 cd/m²
- Lightweight Design
- IP65 Weatherproof Design
- 90° Corner Option Available

* Based on GSCD069 Specification

OLED

Artistic Space beyond Display

Beyond its informative features, LG OLED signage delivers unsurpassed advertising effectiveness, redesigning space as a prestige-enhancing landmark with perfect colors and innovative forms.



OLED LINE UP

Curvable OLED EF5K-P Series

EF5K-P | 55"

- Brightness: 150/400nit (APL 100%/25%)
- Depth: 12.4 mm (Head Only)
- Curvature: ~1,000R(Concave/Convex)
- Interface: HDMI, DP, USB(2), Audio, RS232C, RJ45, IR



* Based on 55EF5K-P Specification

Transparent OLED EW5TK-A Series

EW5TK-A | 55"

- Brightness(Typ.) : 150 / 400 nit (APL 100% / 25%, Without Glass)
- Bezel : 7.9 mm (T/B/L), 144.5 mm (B)



* Based on 55EW5TK-A Specification

Curvable OLED EF5K-L Series

EF5K-L | 55"

- Brightness: 150/400nit (APL 100%/25%)
- Depth: 12.4 mm (Head Only)
- Curvature: ~1,000R(Concave/Convex)
- Interface: HDMI, DP, USB(2), Audio, RS232C, RJ45, IR



* Based on 55EF5K-L Specification

Transparent OLED EW5PG-S Series

EW5PG-S | 55"

- Brightness(Typ.) : 400nit (APL 25%, Without Glass)
- Transparency(Typ.) : 38%
- Standalone Design



* Based on 55EW5PG-S Specification

Flat OLED EJ5K Series

EJ5K | 55"

- Brightness(Typ.): 150/400 nit (APL 100% / 25%)
- Bezel : 5.3 mm (T/B/L), 11.0 mm (B)
- Interface : HDMI/DP/USB(2)/ RS232C/ RJ45/ Audio/ IR

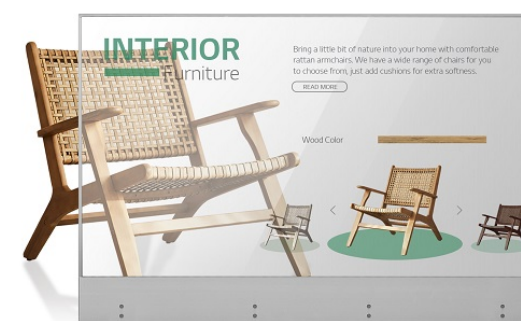


* Based on 55EJ5K Specification

Transparent OLED EW5G-V Series

EW5G-V | 55"

- Brightness(Typ.): 400nit (APL 25%, Without Glass)
- Transparency(Typ.) : 38%
- Bezel : 7.9 mm (T/R/L), 121.7mm (B)
- Interface : HDMI/DP/USB(2)/ RS232C/ RJ45/ Audio/ IR



* Based on 55EW5G-V Specification

OLED LINE UP

OLED Pro Monitor EP5G Series

EP5G | 65"



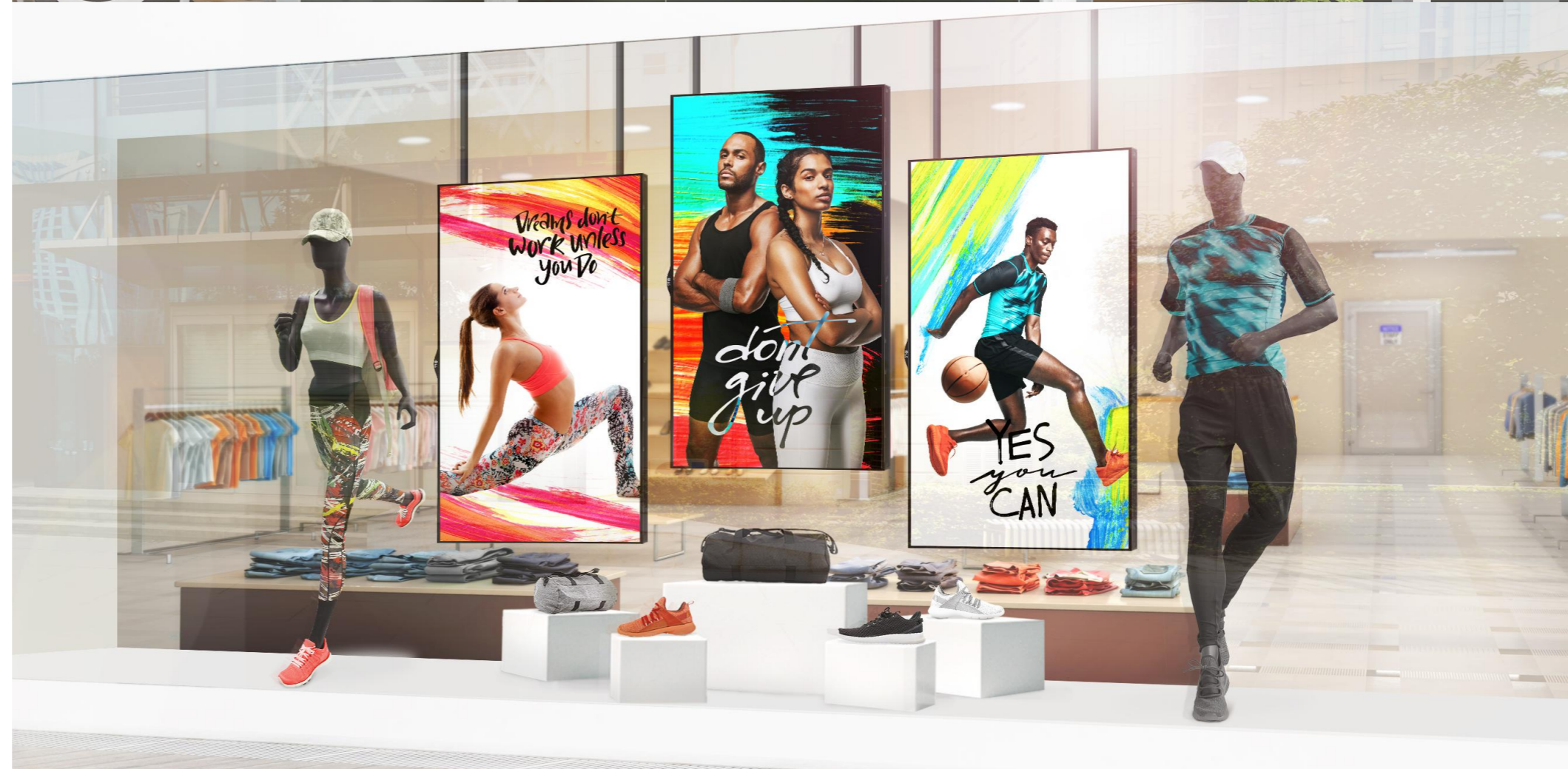
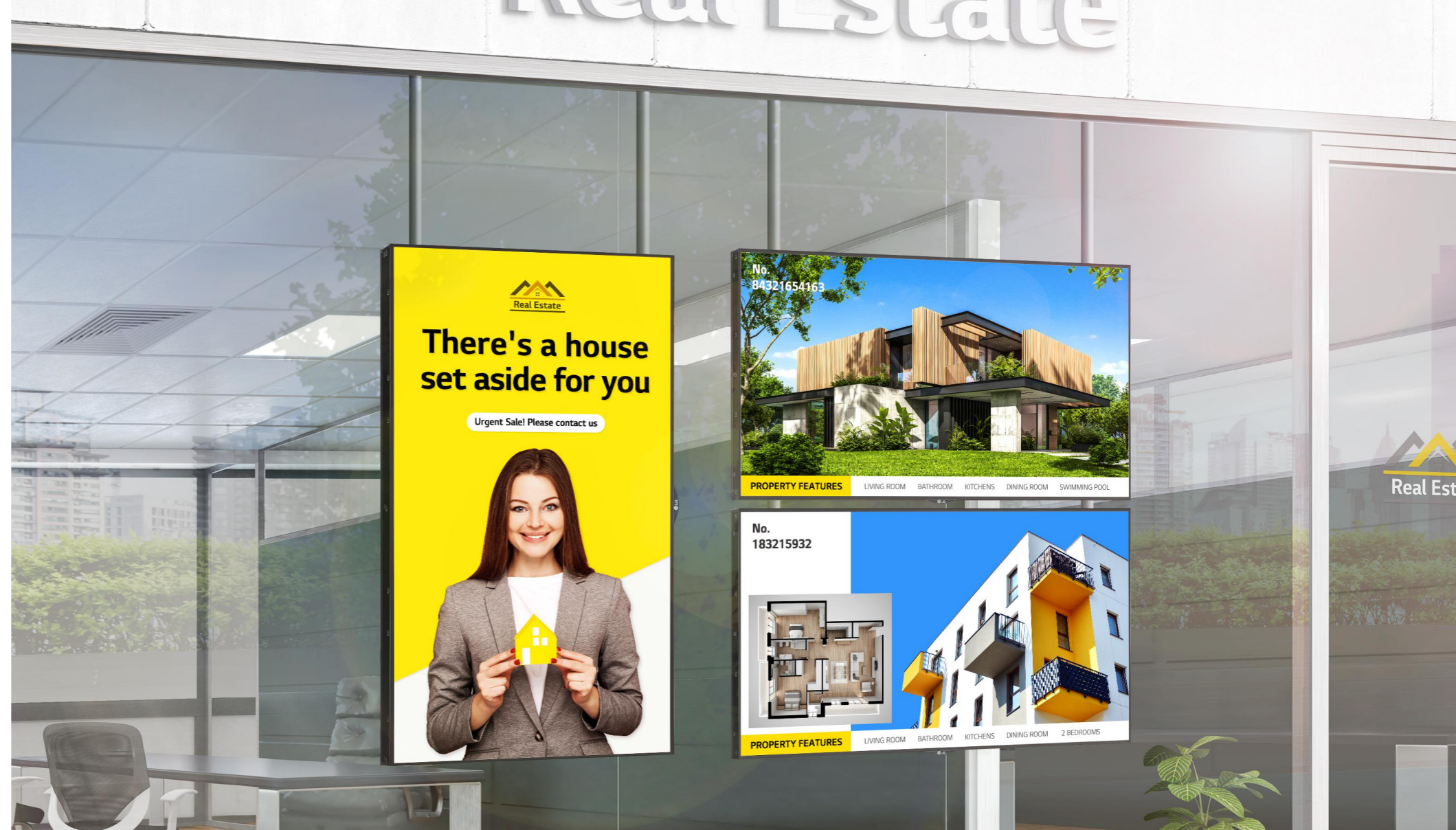
- Accurate Color with a Wide OLED Screen
- Jack Interfaces for Professional (SDI, SFP+, etc.)
- Smart Calibration
- Brightness(Typ.) : 1,000 / 900 / 500 / 180 nit (APL 3% / 10% / 25% / 100%)

* Based on 65EP5G Specification

HIGH BRIGHTNESS

Outstanding Visibility with Reliable Performance

With superior picture quality and excellent durability, the display's eye-catching content will captivate customers even under direct sunlight or extreme environmental fluctuations.



HIGH BRIGHTNESS LINE UP

Window Facing Display XS4J-B Series

XS4J-B | 55" 49"



- Brightness : 4,000 nits (Typ.) / 3,200 nits (Min.)
- Resolution : Full HD (1,920 x 1,080)
- The carbon footprint of this product has been measured and certified.
- Bezel (T,B / R,L) : 12.0 / 9.9 mm
- webOS-based High Performance
- Built-in Wi-Fi

* Based on 55XS4J-B Specification

IP-rated Outdoor Display XE1J-B Series

XE1J-B | 22"



- Brightness (Typ, w/ Glass) : 1,500 nits
- IP56 Rated Dust / Water Proof
- 21.5" of Versatile Display Size
- Wide Operating Temperature Range
- webOS Smart Platform
- Web-based Monitoring Solution

* Based on 22XE1J-B Specification

Window Facing Display XS4G Series

XS4G | 75"



- Brightness : 4,000 nits (Typ.) / 3,200 nits (Min.)
- Resolution : ULTRA HD (3,840 x 2,160)
- Bezel : 13.8 mm (Even Bezel)
- Double-sided Usage with Dedicated Bracket
- Built-in Wi-Fi & Bluetooth
- Web-based Monitoring Solution

* Based on 75XS4G Specification

IP-rated Outdoor Display XE4F-M Series

XE4F-M | 55" 49"



- Brightness(Typ.) : 4,000 cd/m²
- Bezel : 38.4 mm (T/B), 26.0 mm (L/R)
- Interface : HDMI/ DP/HDBaseT/USB/ Audio/ RS232C/ RJ45
- Anti-Reflection Coating
- IP56 Design, IK10 Protective Glass

* Based on 55XE4F-M Specification

Window Facing Display XS2E Series

XS2E | 75" 55" 49"



- Brightness : 2,500 cd/m² (Typ.)
- Life Time : 50,000 hours
- Bezel Width: 11.8 mm(Even, Off-Bezel)
- Depth : 116mm
- Interface: HDMI(2)/ DP/ DVI-D/ RJ45/ USB/ SD Card/ IR/ RS232C/ External Speaker Out

* Based on 75XS2E Specification

IP-rated Outdoor Display XE3FS-B Series

XE3FS-B | 86"



- Brightness(Typ.) : 3,000 cd/m²
- Bezel : 101 mm (T/B), 135 mm (L/R)
- Interface : HDMI/ DP/ DVI-D/ USB/ Audio/ RS232C/ RJ45/ External IR
- Anti-Reflection Coating
- IP56 Design, Protective Glass

* Based on 86XE3FS-B Specification

HIGH BRIGHTNESS LINE UP

IP-rated Outdoor Display XE3C Series

XE3C | 75"

- Brightness(Typ.) : 3,000 cd/m²
- Operating Temperature : -30°C to 50 °C
- IP56 Design
- Interface : HDMI / DP / DVI / RJ45 / RS232C / SD Card / USB3.0 / External speaker out



* Based on 75XE3C Specification

Open-frame Display XF3ES-B Series

XF3ES-B | 75"

- Brightness : 3,000 cd/m² (Typ.)
- Life Time : 50,000 hours
- Bezel : 11.8 mm(Even bezel)
- Depth : 128.9 mm
- Interface : HDMI (2)/ DP/ DVI-D/ USB/ RJ45/ RS232C/ IR/ External speaker out

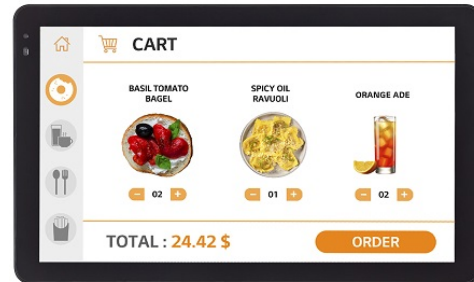


* Based on 75XF3ES-B Specification

Open-frame Display XF1TJ-B Series

XF1TJ-B | 22"

- Brightness : 1,300 nits (Typ. w/Glass)
- IP65 Rated Dust & Waterproof
- 21.5" of Versatile Display Size
- Wide Operating Temperature Range
- webOS Smart Platform
- Built-in Touch Display



* Based on 22XF1TJ-B Specification

Open-frame XF3E-B

XF3E-B | 55" 49"

- Brightness : 3,000 cd/m² (Typ.)
- Life Time : 50,000 hours
- Bezel : 9.9 mm (L/R), 12 mm (T/B)
- Depth : 106.8mm
- Interface: HDMI(2) / DP / DVI-D / RJ45 / RS232C / USB / External speaker out (L/R)



* Based on 55XF3E-B Specification

Open-frame Display XF3SK Series

XF3SK | 86"

- Brightness : 3,300 nits (Typ. w/o Glass)
- Resolution : 3,840 × 2,160 (UHD)
- Long-lasting High Performance
- Temperature Sensor
- Auto Brightness Sensor



* Based on 86XF3SK Specification

Open-frame Display XF3C-B Series

XF3C-B | 75"

- Brightness : 3,000 cd/m² (Typ.)
- Life Time : 50,000 hours
- Bezel : 11.8 mm(Even bezel)
- Depth : 123.9 mm
- Interface : HDMI (2) / DP / DVI / RJ45 / IR / RS232C / USB / SD Card / External speaker out (L/R)



* Based on 75XF3C-B Specification

LG One:Quick Series

What a One:derful Life

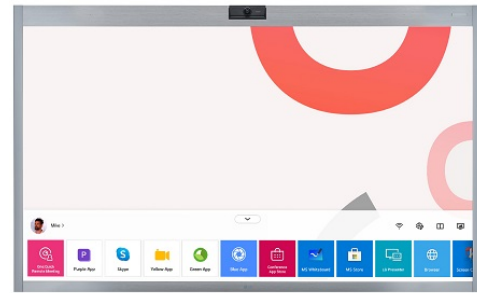
- One:Quick Works
- One:Quick Flex
- One:Quick Share



ONE:QUICK LINE UP

One:Quick Works Series

CT5WN-B | 55"



* Screen images simulated.

- Resolution : 4K Ultra HD (3,840 x 2,160)
- Brightness : 450 nit
- Built-in 4K Camera & Microphone
- Sound (10W + 10W)
- In-Cell Touch (Max. 10 Points)
- Windows 10 IoT Enterprise (Value)

* Based on 55CT5WN-B Specification

One:Quick Flex Series

HT3WN-M | 43"



* Screen images simulated.
* Stands are sold separately.

- Resolution : 4K Ultra HD (3,840 x 2,160)
- Brightness : 350 nit
- Camera : 2K Full HD (1,920 x 1,080), 88° FoV
- Sound : 2.0 Channel (10W + 10W)
- Microphone : 3m Pickup Range
- Windows 10 IoT Enterprise (Basic)

* Based on 43HT3WN-M Specification

One:Quick Works Series

CT5WJ-ZJ | 55"



- Resolution : 4K Ultra HD (3,840 x 2,160)
- Brightness : 450 nit
- Built-in Camera & Microphone
- Sound (10W + 10W)
- In-Cell Touch (Max. 10 Points) & Whiteboard Support
- Zoom Rooms App Preloaded

* Based on 55CT5WJ-ZJ Specification

One:Quick Flex Series

HT3WN (EU) | 43"



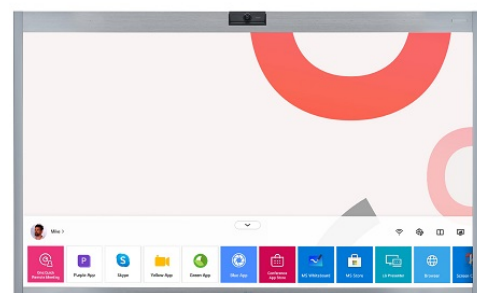
* Screen images simulated.
* Stands are sold separately.

- Resolution : 4K Ultra HD (3,840 x 2,160)
- Brightness : 350 nit
- Camera : 2K Full HD (1,920 x 1,080), 88° FoV
- Sound : 2.0 Channel (10W + 10W)
- Microphone : 3m Pickup Range
- Windows 10 IoT Enterprise (Basic)

* Based on 43HT3WN (EU) Specification

One:Quick Works Series

CT5WJ | 55"



* Screen images simulated.

- Resolution : 4K Ultra HD (3,840 x 2,160)
- Brightness : 450 nit
- Built-in 4K Camera & Microphone
- Sound (10W + 10W)
- In-Cell Touch (Max. 10 Points) & Whiteboard Support
- Windows 10 IoT Enterprise (Value)

* Based on 55CT5WJ Specification

One:Quick Flex Series

HT3WJ | 43"



* Screen images simulated.
* Stands are sold separately.

- Resolution : 4K Ultra HD (3,840 x 2,160)
- Brightness : 350 nit
- Camera : 2K Full HD (1,920 x 1,080), 88° FoV
- Sound : 2.0 Channel (10W + 10W)
- Microphone : 3m Pickup Range
- Windows 10 IoT Enterprise (Basic)

* Based on 43HT3WJ Specification

ONE:QUICK LINE UP



LG One:Quick Share

One:Quick Share Series

SC-00DA

- Embedded OS : Linux
- Wi-Fi : IEEE 802.11 a/b/g/n/ac
- Connectivity : USB 2.0 Type A (1)
- Work together with LG One:Quick Share Application and Compatible LG digital signage models

* Based on SC-00DA Specification

INTERACTIVE DIGITAL BOARD

Smart Collaboration beyond Touch Experience

The LG Interactive Digital Board (IDB) boosts meeting productivity by encouraging participants to freely share their ideas on the screen using intuitive touch and embedded collaboration solutions.



INTERACTIVE DIGITAL BOARD LINE UP

LG CreateBoard TR3DK-BM Series

TR3DK-BM | 86" 75" 65" 55"

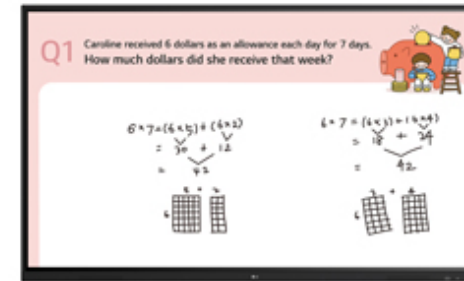


- Internal Memory : 64GB (Storage) / 8GB (RAM)
- Brightness (w/o Glass) : 440 nit (Max.), 390 nit (Typ.)
- Resolution : 3,840 × 2,160 (UHD)
- Multi-Touch Point : 40 Points (Max.)

* Based on 86TR3DK-BM Specification

LG CreateBoard TR3DJ Series

TR3DJ | 86" 75" 65"



- Brightness : 390 nit (w/o Glass, Typ.)
- Multi Touch Point : 20 Points (Max.)
- Interface : HDMI (3), RGB (1), Audio In (1), RS-232C In (1), RJ45 (1), USB 3.0 Type A (3), USB 2.0 Type A (3), Audio Out / Optical Output, Touch USB (2)

* Based on 86TR3DJ Specification

LG CreateBoard TR3DK-BG Series

TR3DK-BG | 86" 75" 65" 55"



- Internal Memory : 32GB (Storage) / 4GB (RAM)
- Brightness (w/o Glass) : 440 nit (Max.), 390 nit (Typ.)
- Resolution : 3,840 × 2,160 (UHD)
- Multi-Touch Point : 40 Points (Max.)

* Based on 86TR3DK-BG Specification

Built-in Touch Signage TC3CG-H Series

TC3CG-H | 55"

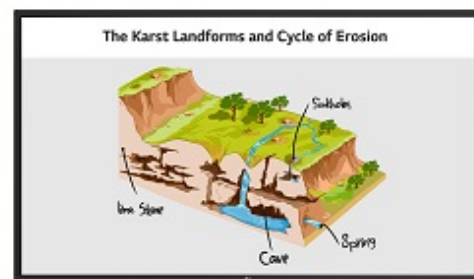


- Brightness : 350nit (w Glass, typ)
- Multi Touch Point : 40 Points (Max.)
- Interface (Input) : HDMI (2, HDCP 2.2/1.4), DP (1, HDCP2.2/1.3), RS-232C In, RJ45 (LAN), IR In, USB2.0 Type A (2)
- Interface (Output) : DP Out (1, Input HDMI1/2/DP/OPS), Audio Out, External Speaker Out (6 ohm), Touch USB (USB 2.0 Type B), RS-232C Out

* Based on 55TC3CG-H Specification

LG CreateBoard TR3PJ Series

TR3PJ | 98" 86" 75" 65"

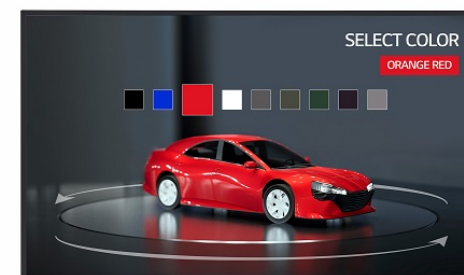


- Brightness : 390 nit (w/o Glass, Typ.)
- Multi Touch Point : 20 Points (Max.)
- Interface : HDMI (3, HDCP 2.2 / 1.4), Audio In, RS-232C In, RJ45 (LAN), USB 3.0 Type A (4), USB 2.0 Type A, USB Type C (USB-PD, DP-Alt, Mode)

* Based on 98TR3PJ Specification

Touch Open Frame TNF5J Series

TNF5J | 55" 43" 32"



- Brightness : 450 nit
- Multi Touch Point : 10 Points (Max.)
- Interface : HDMI (2, HDCP 2.2/1.4), RS-232C In, RJ45(LAN), IR In, USB2.0 Type A, Audio Out, Touch USB (USB 2.0 Type B)

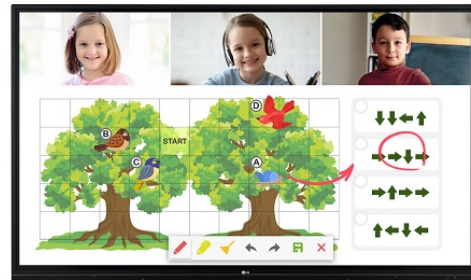
* Based on 55TNF5J Specification

INTERACTIVE DIGITAL BOARD LINE UP

Touch Open Frame TNF3K Series**TNF3K** | 27"

- 27" Full HD Touch Display
- Brightness : 300 nit
- Multi-Touch Point : Max. 10 Points
- Interface : HDMI (2) / RS-232C / RJ45 / IR / USB 2.0 Type A / Audio / Touch USB (USB 2.0 Type B)

* Based on 27TNF3K Specification

LG CreateBoard TR3BG-BX Series**TR3BG-BX** | 55"

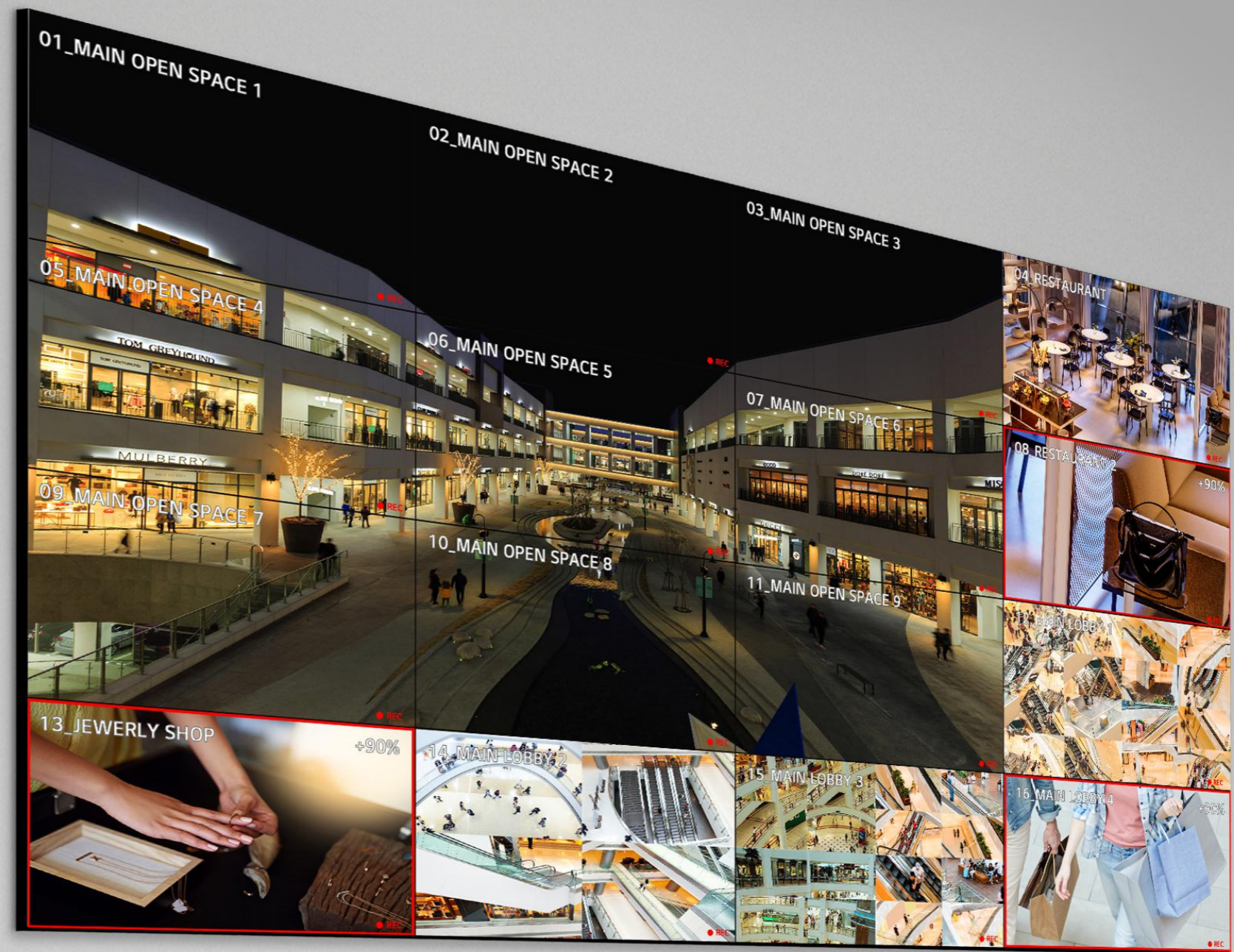
- Brightness : 311 nit (w/o Glass, Typ.)
- Touch Type : IR
- Multi Touch Point : Max. 20 Points
- Interface : HDMI (3), HDCP2.2/1.4, RGB, Audio In, RS232C In, RJ45(LAN), USB3.0 Type A (3), USB2.0 Type A (3), HDMI Out (1), Audio Out / Optical Output, Touch USB (2)

* Based on 55TR3BG-BX Specification

VIDEO WALL

Artistic Immersion, Overwhelming Captivation

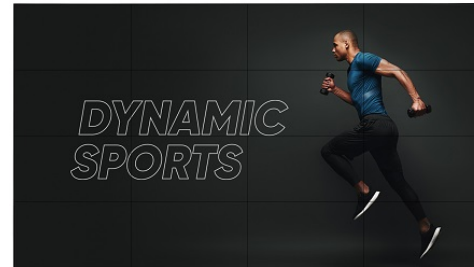
Seamlessly assembled on a large video wall screen, the impressive immersion generated by LG's extremely narrow bezel provides an extraordinary viewing experience.



VIDEO WALL LINE UP

Video Wall VL5PJ Series

VL5PJ | 55" 49"



- Brightness(Typ.) : 500 nit
- Bezel : 2.25 mm (T/L), 1.25 mm (B/R)
- Depth : 93.1 mm
- Interface : HDMI/ DP/ DVI-D/ USB/ RS232C/ RJ45/ Audio/ IR

* Based on 55VL5PJ Specification

Video Wall VL5G-M Series

VL5G-M | 49"

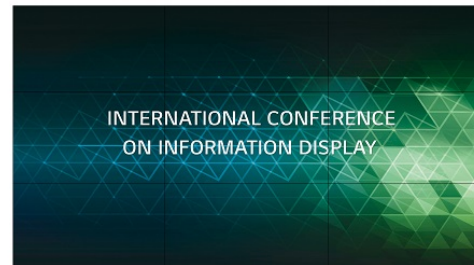


- Brightness(Typ.) : 500 cd/m²
- Bezel : 2.25 mm (T/L), 1.25 mm (B/R)
- Depth : 89.7 mm
- Interface : HDMI/ DP/ DVI-D/ USB/ RS232C/ RJ45/ Audio/ IR

* Based on 49VL5G-M Specification

Video Wall VH7J-H Series

VH7J-H | 55"

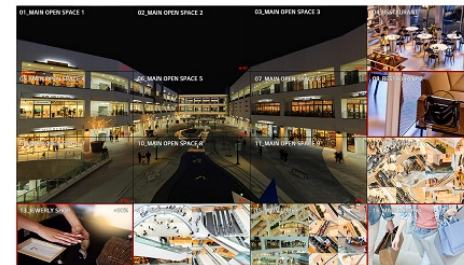


- Brightness(Typ.) : 700 nit
- Bezel : 1.74mm (Panel Bezel to Panel Bezel), 1.3mm (T/L), 0.44mm (B/R)
- Depth : 86.9 mm
- Interface : HDMI/ DP/ DVI-D/ USB/ RS232C/ RJ45/ Audio/ IR

* Based on 55VH7J-H Specification

Video Wall VSH7J Series

VSH7J | 55"



- Brightness(Typ.) : 700 cd/m²
- Bezel : 0.44 mm (Even)
- Depth : 86.5 mm
- Interface : HDMI(2)/ DP/ DVI-D/ USB/ RS232C/ RJ45/ Audio/ IR
- Smart Calibration

* Based on 55VSH7J Specification

Video Wall VM5J-H Series

VM5J-H | 55"

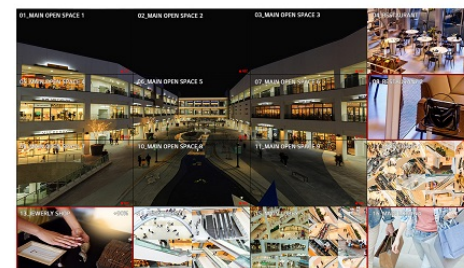


- Brightness(Typ.) : 500 nit
- Bezel : 1.74mm (Panel Bezel to Panel Bezel), 1.3mm (T/L), 0.44mm (B/R)
- Depth : 86.9 mm
- Interface : HDMI/ DP/ DVI-D/ USB/ RS232C/ RJ45/ Audio/ IR

* Based on 55VM5J-H Specification

Video Wall VSM5J Series

VSM5J | 55"



- Brightness(Typ.) : 500 cd/m²
- Bezel : 0.44 mm (Even)
- Depth : 86.5 mm
- Interface : HDMI(2)/ DP/ DVI-D/ USB/ RS232C/ RJ45/ Audio/ IR
- Smart Calibration

* Based on 55VSM5J Specification